

The logo consists of the letters 'LED' in a bold, stylized, sans-serif font. The 'L' and 'E' are connected, and the 'D' is separate. The letters are black and set against a white background.The logo features the word 'beauty' in a pink, lowercase, sans-serif font, followed by 'led' in a white, lowercase, sans-serif font. To the right of the text is a graphic of three overlapping circles: a small grey one at the top, a medium pink one in the middle, and a large white one at the bottom. Below the main text is the tagline 'my body partner.' in a smaller, white, lowercase, sans-serif font.

**beauty**led   
*my body partner.*



## **beautyled**

The new line **beautyled** include a wide range of body and skin care machines. The equipments are colored and juvenile fashion, easy to use and easily portable. **beautyled**, an elegant product, provided

with the most contemporary work systems, studied for important and fashion beauty salons and SPA. It gives to each room a touch of style and class, all rigorously Made in Italy.

### **User friendly**

Thanks to the use of an interface with icons, working with beautyled line is simple, intuitive and even funny. Operating on the imperfections through the visualization and the selection of the set treatments has never been so easy!

The wide display of 7" inches allows direct contact with your work partner in a fast and intuitive way. With a simple touch on the icons in the touch screen, **beautyled** will be able to execute the selected treatments.

### **What's news**

- High luminosity touchscreen display
- Intuitive icons interface
- Controls of the unit made by one knob
- Multipurpose encoder, keys or touchscreen
- Stored protocols inside
- Customized programs
- Possibility to upgrade through USB port
- Six languages software

## **RF Ablator 02**

*Radiofrequency.*

## **Eracles 04**

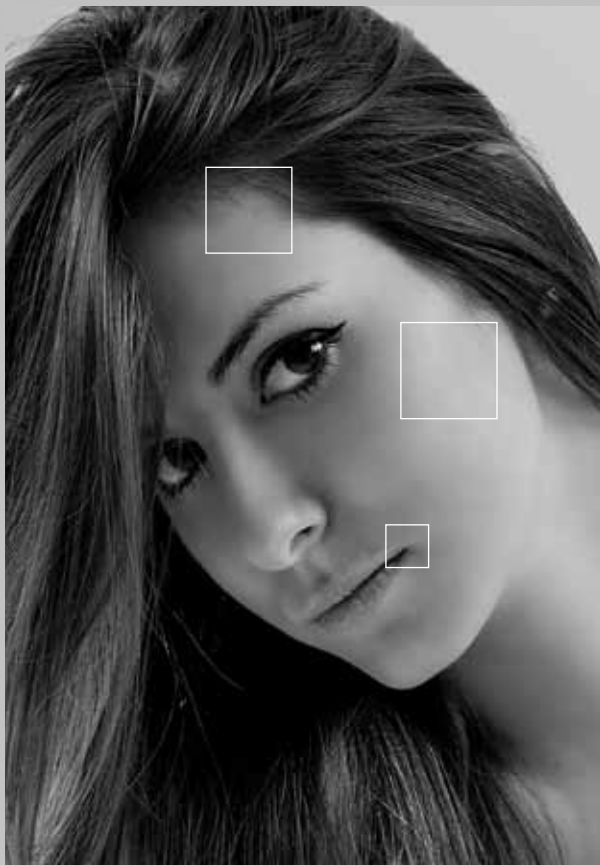
*Transdermal delivery.*

## **HP Presso 06**

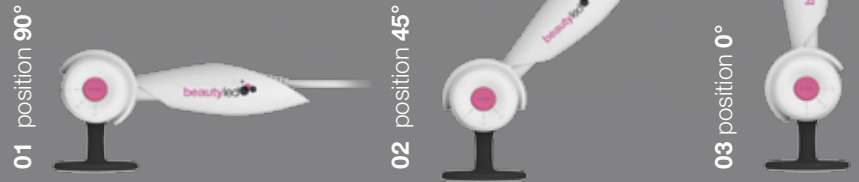
*Pressotherapy.*

## **US Sonic 08**

*Ultrasound.*

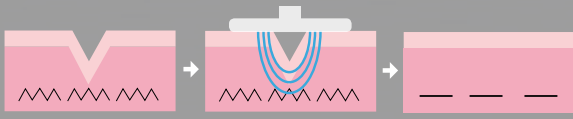


### Three positions handle



### Benefits

- Attenuation of the wrinkles and signs of the time (lifting effect)
- Filling action of face, neck and décolleté
- Increase the derma density
- Thinning scars
- Deep treatment of fats and imperfections due to cellulitis encouraging the natural combustion
- Superficial tonification with stretching effect on the laxity
- Parameters and settings for all the areas of the face and body
- The procedure continues to take place over months and lasting about two years after latest application



### RF Ablator

Radiofrequency is a technology of rejuvenation of face and body areas through Radio Frequency current.

**RF Ablator** is a non-invasive technology that works by heating up the dermis using a particular probe that emits RF waves. This procedure regenerates the collagen production with the elastin skin remodeling.

**RF Ablator** is used for skin tightening and reduction of wrinkles, removing the signs of ageing. It can also be used as a preventive treatment for skin that is starting to show the signs of aging.

**RF Ablator** has a simple and intuitive touch screen control. In this way it is easy to operate the machine with your finger. The Screen content is easy to read thanks





# *RF Ablator, Radiofrequency.*

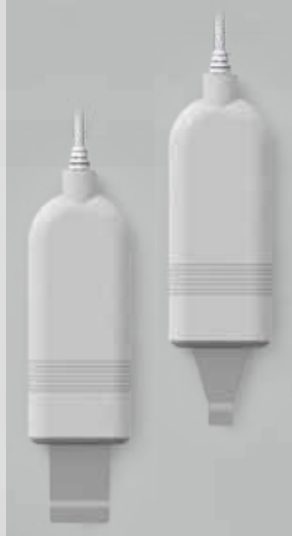
to the large and colored controls and fonts. **RF Ablator** is easy to use with its programs for Face and Body. For each program you can select the working parameters to adjust the treatment to each customer's needs.

## **Electrodes with four different diameters**



## Sonophoresis handpiece

Body Ø55 mm  
Face Ø32 mm



## Body Peeling and Face Scrubber handpiece

## Eracles

Transdermal Delivery is a way of administering products wherein active ingredients are delivered across the skin.

**Eracles** is a transdermal delivery machine that carries a drug, nutrient, or cosmetic agent through two important layers to the human skin: Epidermis and Dermis. For transdermal delivery, products must pass through the two sublayers of the

epidermis to reach the microcirculation of the dermis. The advantage of transdermal delivery is that any products does not have to pass through the digestive tract, the liver or the bloodstream.

**Eracles** is non-invasive method for Sonophoresis, Peeling and MF (Modulation Frequency) drug delivery. Eracles helps to promote the production of collagen, which smoothes the skin and reduced the appearance of fine lines and

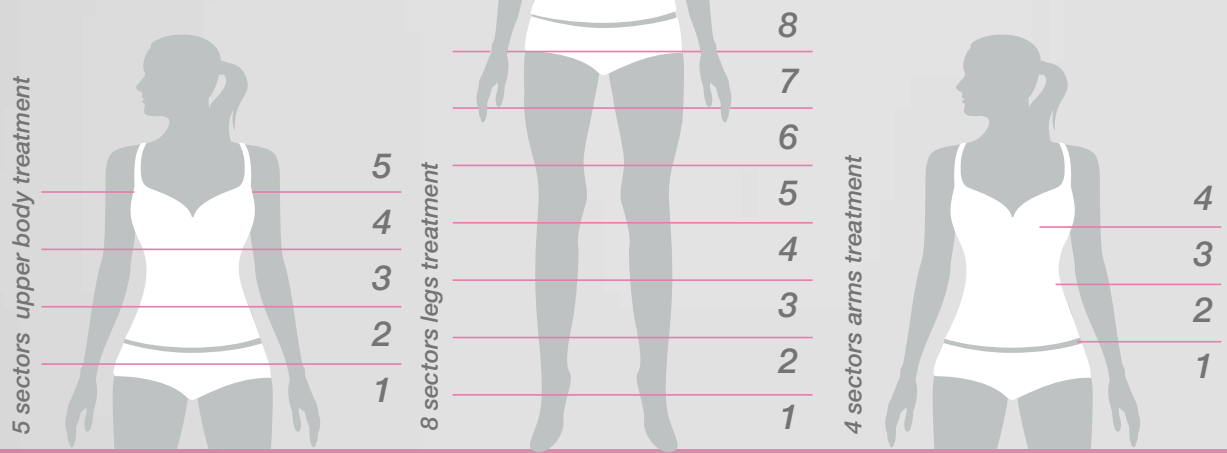
wrinkles (Sonophoresis), removes of the top most layer of dead skin cells to reveal the fresh layer of new and smoother skin underneath with non-invasive and effective treatment for reducing wrinkles, age-spots, acne, fine lines, dry skin patches and clogged pores (Peeling), **Eracles** helps to reduce wrinkle, stretch marks, skin tightening, striae gravidarum removal, promoting the natural renewal and rejuvenation of the skin.



## **Benefits**

- *Ultrasounds peeling system of medium frequency 24-28 kHz*
- *Dreno-lifting of surface*
- *Face handpiece 3MHz + active principle chamber ionization*
- *Body handpiece 3 MHz + active principle chamber ionization*
- *Quick results for healthier skin*
- *Increased the suppleness and glow of the skin*
- *Skin appearance rapidly improves*
- *Stimulates new cell growth and revitalizes skin's appearance*
- *Non-invasive Mesotherapy alternative*
- *Pain free*

*Eracles,  
Transdermal  
delivery.*



## HP Presso

Pressotherapy is a compression system that increases the lymphatic and venous flow. It works through a controlled pump that inflates the individual sections of specific accessories utilized, which are positioned around the limbs.

**HP Presso** has an exclusive detoxifying treatment, which through lymphatic drainage, helps the body to eliminate the toxin. This procedure allows to slim and redefine the legs, stomach and arms, improving the skin

tone. **HP Presso** is particularly indicated for the treatment of cellulite, of slimming and detoxifying, for body shaping as a safe alternative to liposuction, it is a good solution to relieve pain and swelling providing immediate comfort.

**HP Presso** has a simple and intuitive touch screen control, so it is easy to operate the machine with your finger or a stylus. The Screen content is easy to read thanks to the large and colored controls and fonts.

**HP Presso** is easy to use with its memorized



# HP Presso, Pressotherapy.





## Three body accessories



programs. For each program you can select the working parameters to adjust the treatment on each customer's needs.

**HP Presso** has one channel for LEG or for ARM. Channel has a separate sectors, it is possible to select the power of pressure for each of them.



## Benefits

- Lympho drain effect
- Deep draining vein effect
- Anti-edemigene effect
- Anti-cellulitis effect\*
- Leg tratment with different programs
- Arms treatment
- Differents programs based on the needs leg+arms
- Accessories are adjustable in height and width, depending on the needs and the dimensions of the the treated subject
- Maximum comfort given by the quietness of the equipment
- Automatic deflation of the bladders

\*imperfection



## Benefits

- Multiple treatments for the different stadium of imperfections due to the cellulitis
- Treatments on the woman as well as men
- Possibility to act also on specific parts
- Head for the manual treatments anti-cellulitis\* and streamlining impact
- Pre-set programs for all the body areas
- Adjuvant treatment before and after liposuction
- Improve of the metabolism of adipose tissue
- Smoothing skin
- Improving of the microcirculation

\*imperfection





## *US Sonic, Ultrasound.*

### **US Sonic**

Ultrasound waves are transmitted with an ultrasound probe directly into the fat layer of the skin (adipocyte), stimulating lipolysis of fat cells, triglycerides are released from fat cells. These fats are then expelled from the body naturally through the excretory organs.

**US Sonic** uses the ultrasound cutting-edge technology of very high speed, low-frequency sound waves that radiate invisible micro vibrations deep within cells, helping stimulate the skin's natural repair mechanisms in distinct ways.

**US Sonic** is gentle, non-invasive, safe and suitable for all skin types, from Rosacea/ Sensitive to Acne to Mature skins. Even

the most sensitive skin will benefit from Ultrasound treatments.

**US Sonic** gives immediate and visible result after each treatment, the skin of the body and face will immediately appear clear and rejuvenated. **US Sonic** uses a procedure comfortable and painless, has no side effects.



# LED SpA

*Italian beauty equipments*

## Company profile

**LED SpA** is one of the leading professional on designing and manufacturing of beauty equipment in Italy, established in 1982 with the factory located in Aprilia, 40 kilometers far from Rome.

**LED SpA** operates primarily in Italy, Europe and Asia, but plans to continue to expand in the near future, doubling its plant within the next years and increasing both its research and developing activity. Initially the **LED SpA** production was mainly focused on the creation of Electrosurgical Equipment and some equipment for physiotherapy, the market was limited to the Italian territory.

**LED SpA** has achieved a broad consensus in the industry by using innovative processing methods, but always related to the Italian tradition.

We have a wide range of products for medical use, electrosurgery, physiotherapy equipment, devices for home use and finally, aesthetic equipment, satisfying the varied needs of even the most demanding customers.

All our models are made in accordance with the latest European Standards.

The requirements of excellent materials guarantee the unique quality of our product.

Nowadays, **LED SpA** products are well know all over the worlds, with customers in more the 90 countries.

**LED SpA** relies high quality production lines, with professional engineers, qualified staffs, furthermore it is in compliance with ISO 9001 and ISO 13485.



WE EXPORT TO OVER 100

COUNTRIES WORLDWIDE

FOUNDED IN 1982

OVER 12.000mq EXPANDED

OVER 40 EMPLOYEES



**LED SpA**

via Selciatella, 40  
04011 Aprilia (LT) - Italy  
**T** +39 06 92 87 0045  
**F** +39 06 92 87 0046  
[www.led.it](http://www.led.it) - [info@led.it](mailto:info@led.it)

# beautyled accessories

## *RF Ablator* code RF002

|          |            |                                  |
|----------|------------|----------------------------------|
| 00100.03 | <b>1pz</b> | Power supply cable 2m SIEM-IEC   |
| 00404.08 | <b>1pz</b> | Cable for neutral plate 5365     |
| 5365     | <b>1pz</b> | Steel neutral electrode          |
| RFAMA    | <b>1pz</b> | RF Ablator handpiece             |
| THRTER0  | <b>1pz</b> | Set of Applicator Resistive Head |

### **Optional.**

Trolley  
beautyled carrying bag

## *Eracles* code ER002

|            |            |   |
|------------|------------|---|
| 00100.03   | <b>1pz</b> | Power supply cable 2m SIEM-IEC            |
| 00600.03   | <b>1pz</b> | Conductive rubber electrode 120 x 160mm   |
| 00601.02   | <b>1pz</b> | Envelope sponges 120 x 160mm              |
| 00602.060  | <b>1pz</b> | Fasting bandage size 600x80 mm            |
| 2030NE-260 | <b>1pz</b> | Cable connection 2,6 mt BLACK             |
| 90100.20   | <b>1pz</b> | Face SCRUBBER handpiece                   |
| 90100.30   | <b>1pz</b> | Body PEELING handpiece                    |
| ERUS332    | <b>1pz</b> | Sonophoresys Face handpiece - 32 mm dia.  |
| ERUS355    | <b>1pz</b> | Sonophoresys Body handpiece - 55 mm dia.  |
|            | <b>5pz</b> | Syringe 5ml - LUER LOCK (without needle)  |
|            | <b>5pz</b> | Syringe 50ml - LUER LOCK (without needle) |

### **Optional.**

Trolley  
beautyled carrying bag

## *HP Presso* code HP002

|          |            |  |
|----------|------------|--|
| 00100.03 | <b>1pz</b> | Power supply cable 2m SIEM-IEC             |
| 70600.80 | <b>1pz</b> | Double legging FISIO AUTO 8 with marsupium |

### **Optional.**

Trolley  
beautyled carrying bag  
PRSB4 Arm FISIO AUTO 4 sectors  
PRSG6 Jacket FISIO AUTO 5 sectors

## *US Sonic* code US002

|           |            |                                |
|-----------|------------|--------------------------------|
| 00100.03  | <b>1pz</b> | Power supply cable 2m SIEM-IEC |
| USMANCAV2 | <b>1pz</b> | US handpiece                   |

### **Optional.**

Trolley  
beautyled carrying bag



beautyled 

**LED SpA**

*via Selciatella, 40*

*04011 Aprilia (LT) - Italy*

**T** +39 06 92 87 0045

**F** +39 06 92 87 0046

*www.led.it - info@led.it*